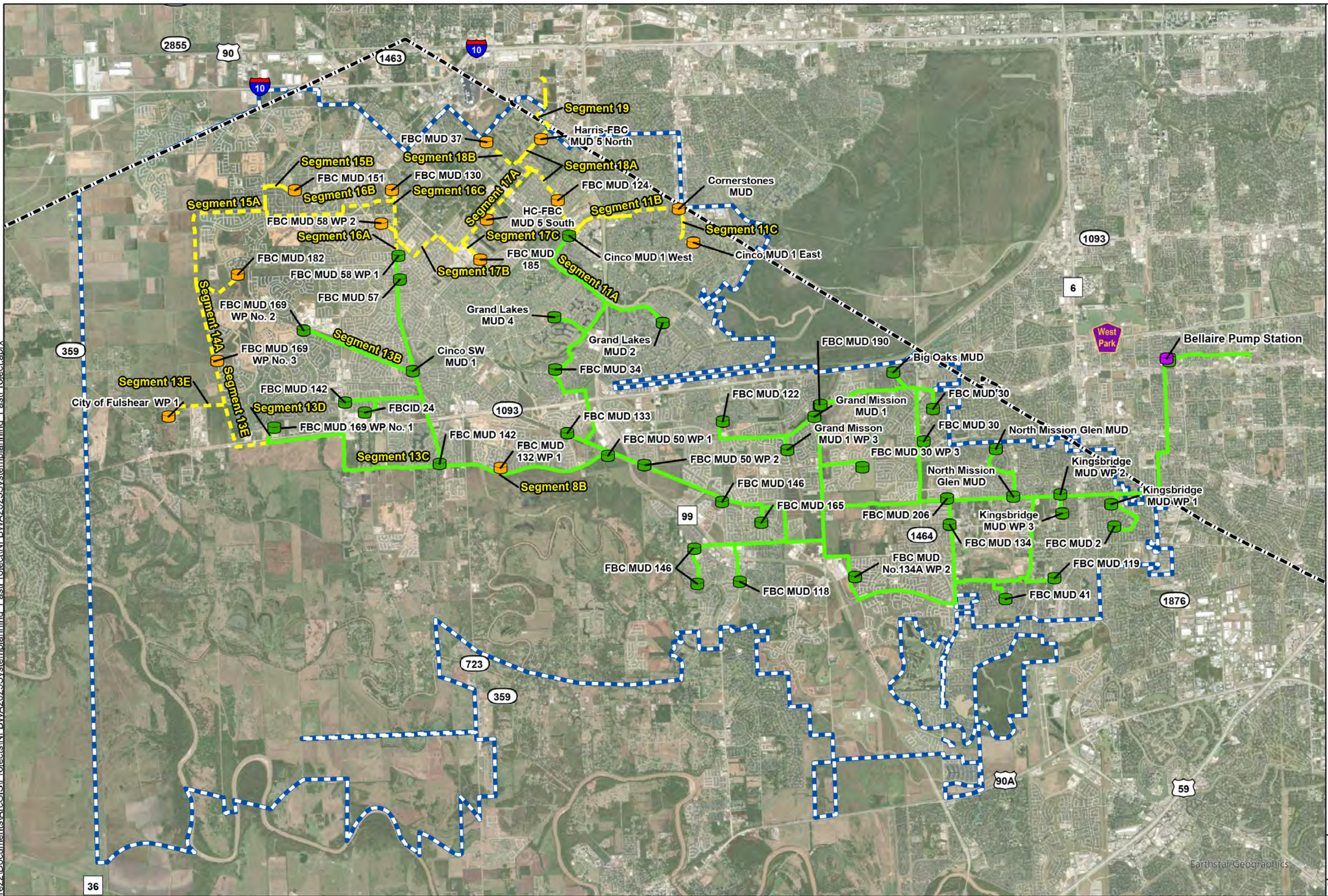
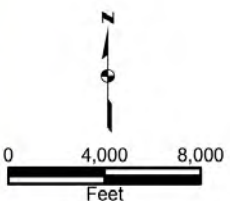




C:\Users\lcnerrez2\Documents\ArcGIS\Projects\NFBWA2025\Systemplanning_FastProject.aprx



- Existing Pump Station
- Existing Water Plant
- Existing Waterline
- Future Waterline
- Fort Bend County Line
- NFBWA Boundary
- Future Water Plant
- Existing Water Connection
- Future Water Connection



Disclaimer:
Every effort has been made to ensure the accuracy of the basemap data. BGE, Inc. assumes no liability or damages due to errors or omissions.

Phase 1

Date: Dec. 2020 Job No: 2248-14

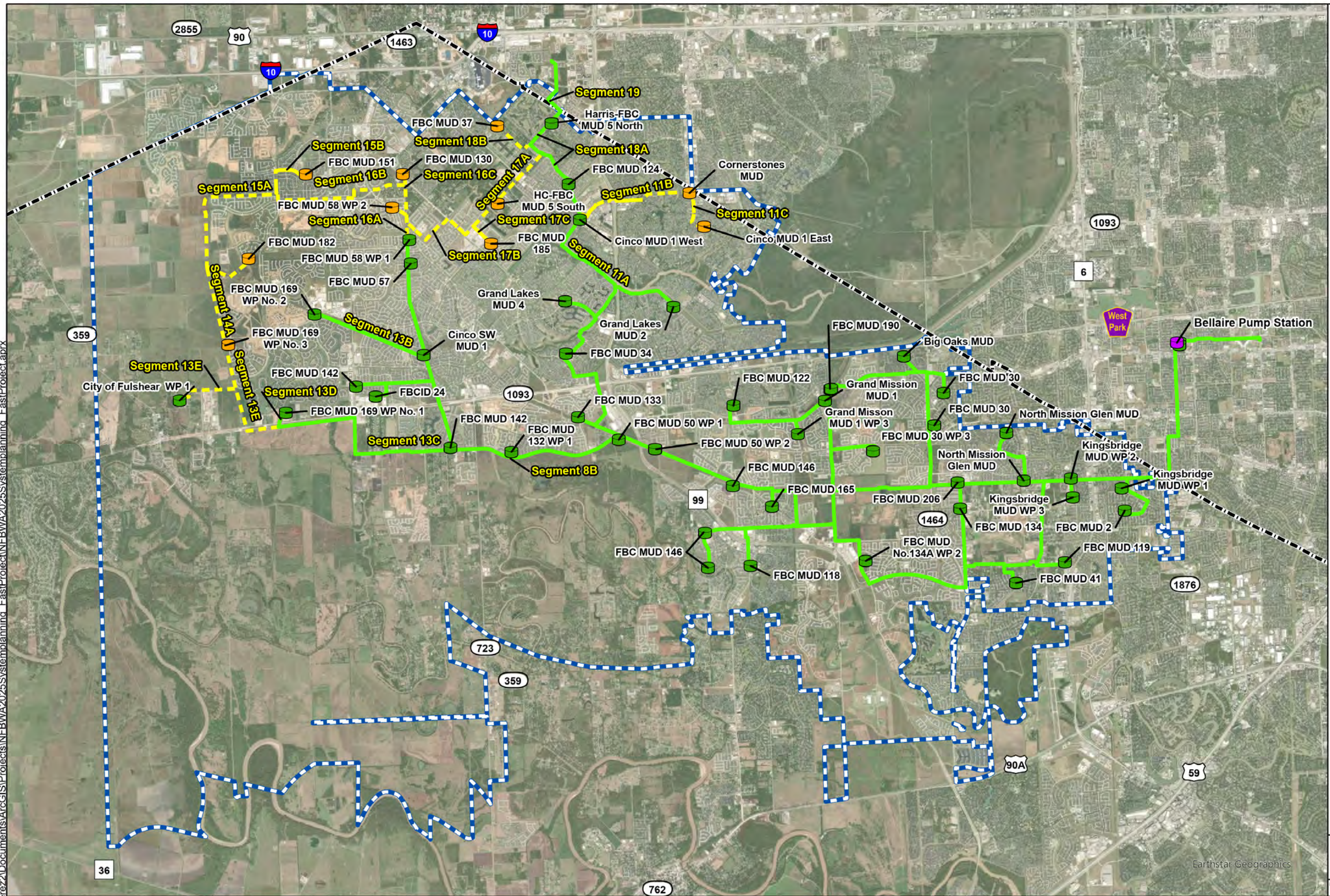
Phase 1

BGE, Inc.
Tel: 281-558-8700
www.bgeinc.com

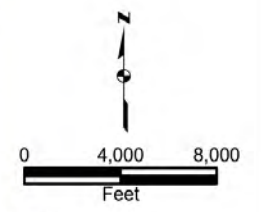
Earthstar Geographics



C:\Users\lcerez2\Documents\ArcGIS\Projects\NFBWA2025\Systemplanning_FastProject.aprx



- Existing Pump Station
- Existing Water Plant
- Existing Water Connection
- Future Water Plant
- Future Water Connection
- Existing Waterline
- Future Waterline
- Fort Bend County Line
- NFBWA Boundary



Disclaimer:
Every effort has been made to ensure the accuracy of the basemap data. BGE, Inc. assumes no liability or damages due to errors or omissions.

Phase 2

Date: Dec. 2020 Job No: 2248-14

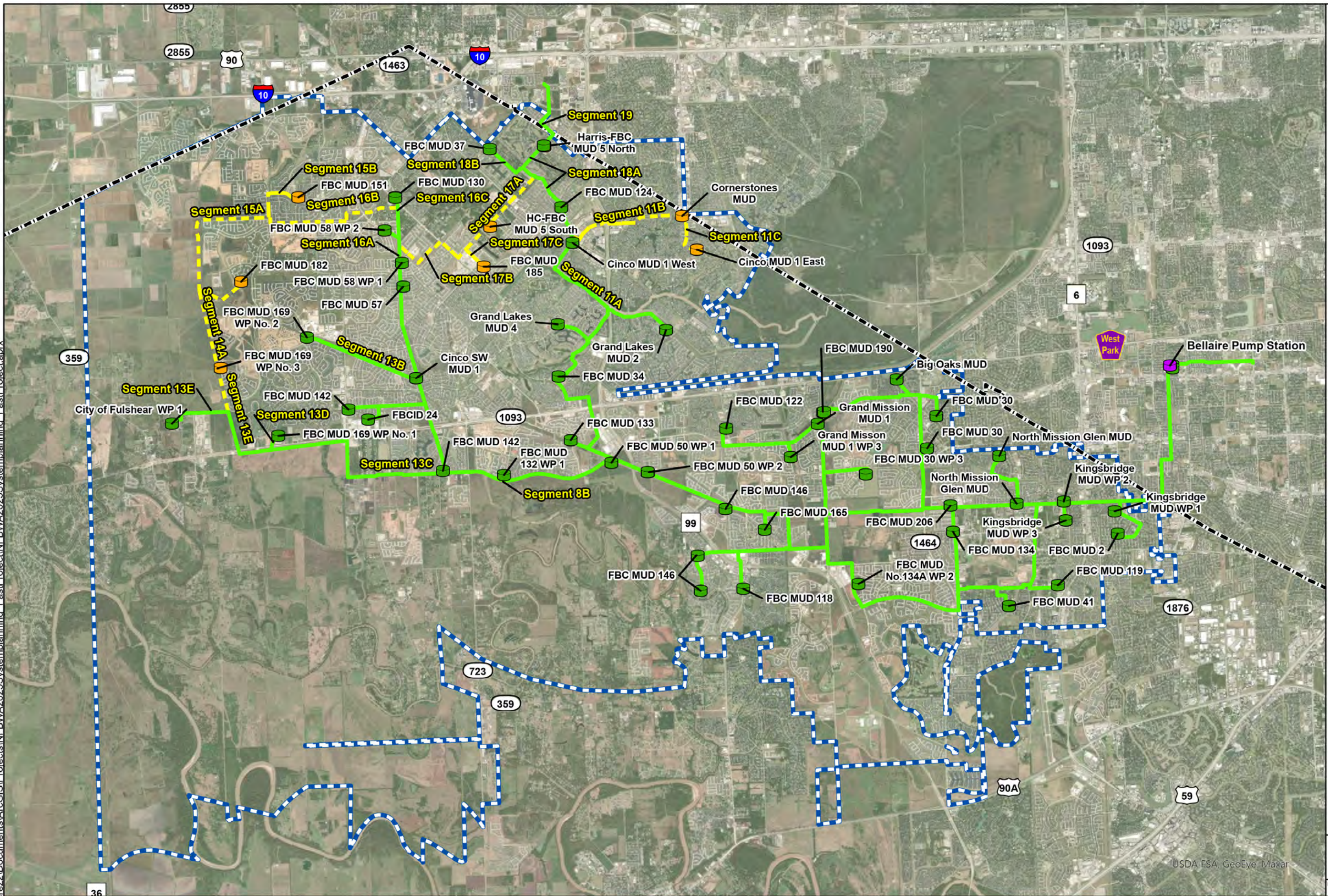
Phase 2

BGE, Inc.
Tel: 281-558-8700
www.bgeinc.com

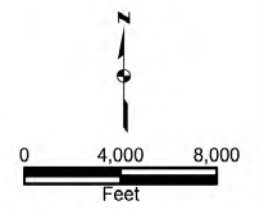
Earthstar Geographics



C:\Users\lcner2\Documents\ArcGIS\Projects\NFBWA2025\Systemplanning_Fast\Project\NFBWA2025\Systemplanning_Fast\Project.aprx



- Existing Pump Station
- Existing Water Plant
- Existing Waterline
- Future Waterline
- Fort Bend County Line
- NFBWA Boundary
- Future Water Plant
- Connection
- Proposed Waterline
- Connection



Disclaimer: Every effort has been made to ensure the accuracy of the basemap data. BGE, Inc. assumes no liability or damages due to errors or omissions.

Phase 3

Date: Dec. 2020 Job No: 2248-14

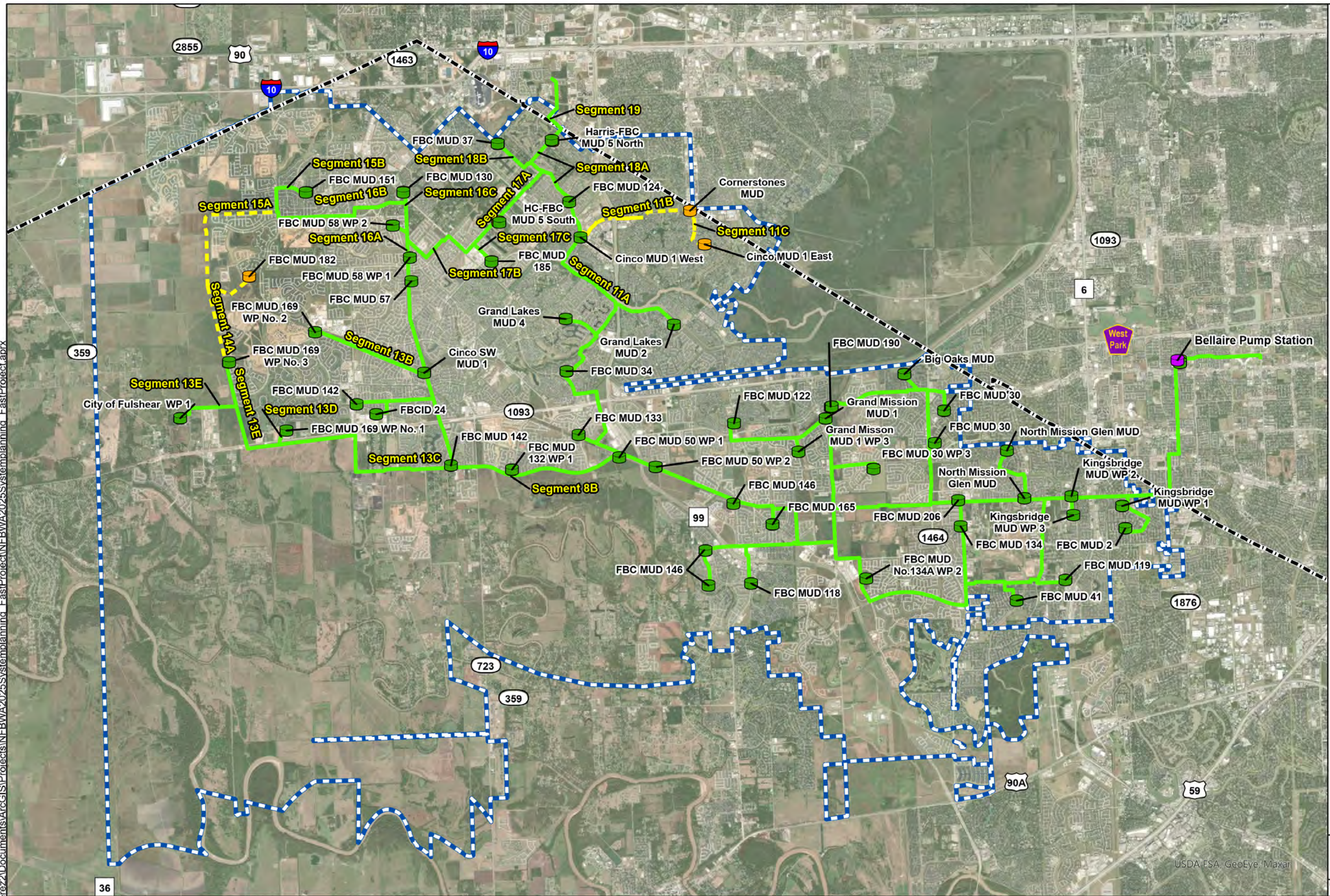
Phase 3

BGE, Inc.
Tel: 281-558-8700
www.bgeinc.com

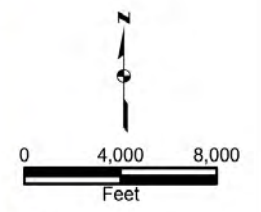
USDA FSA, GeoEye, Maxar



C:\Users\lcnerz2\Documents\ArcGIS\Projects\NFBWA2025\SystemPlanning_FastProject.aprx



- Existing Pump Station
- Existing Water Plant Connection
- Future Water Plant Connection
- Existing Proposed Waterline
- Future Waterline
- Fort Bend County Line
- NFBWA Boundary



Disclaimer: Every effort has been made to ensure the accuracy of the basemap data. BGE, Inc. assumes no liability or damages due to errors or omissions.

Phase 4

Date: Dec. 2020 Job No: 2248-14

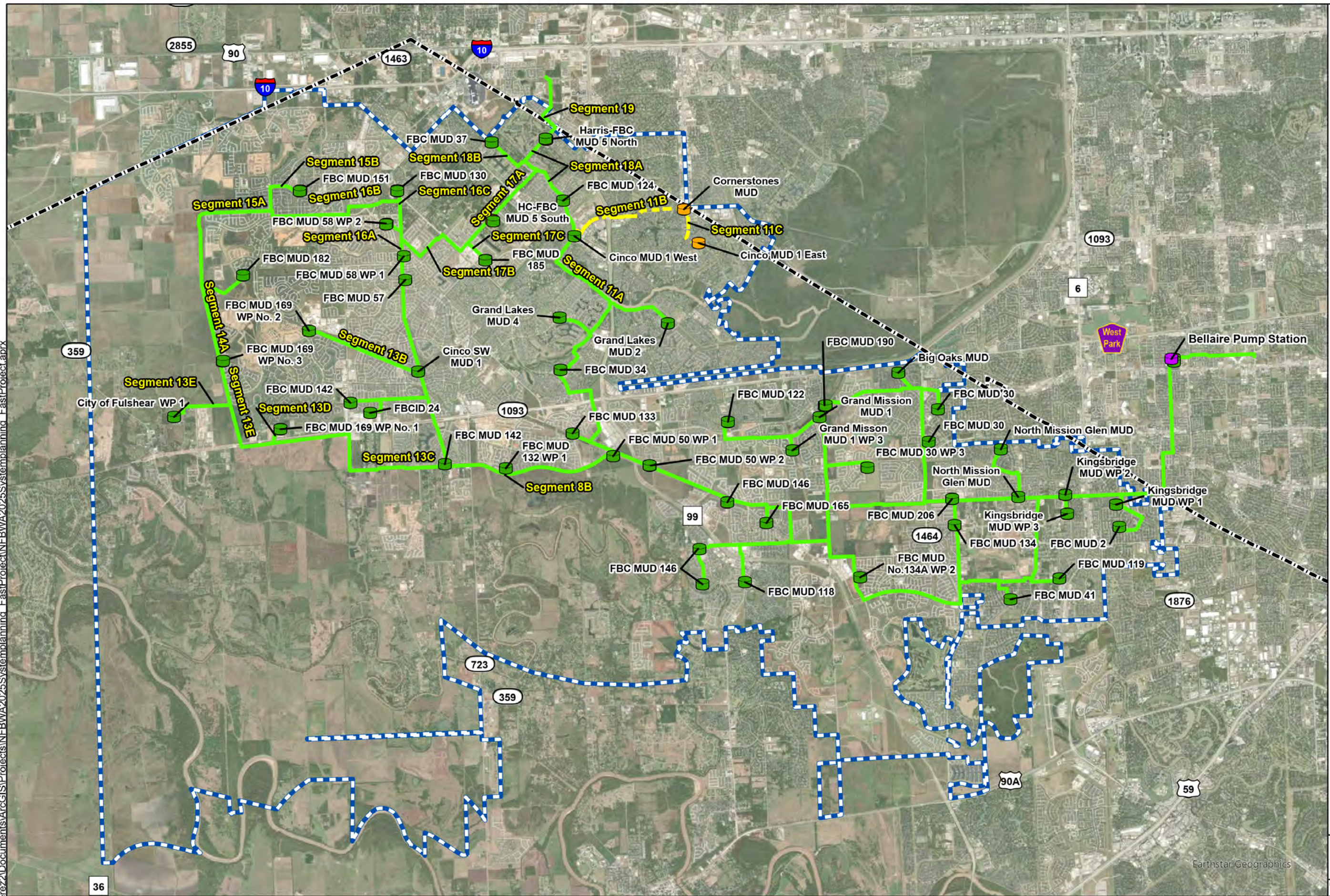
Phase 4

BGE, Inc.
Tel: 281-558-8700
www.bgeinc.com

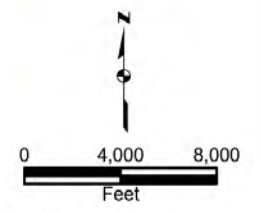
USDA FSA, GeoEye, Maxar



C:\Users\lcere2\Documents\ArcGIS\Projects\NFBWA2025\Systemplanning_FastProject\NFBWA2025\Systemplanning_FastProject.aprx



- Existing Pump Station
- Existing Water Plant
- Existing Waterline
- Future Waterline
- Fort Bend County Line
- NFBWA Boundary
- Future Water Plant
- Existing Waterline Connection
- Future Waterline Connection



Disclaimer: Every effort has been made to ensure the accuracy of the basemap data. BGE, Inc. assumes no liability or damages due to errors or omissions.

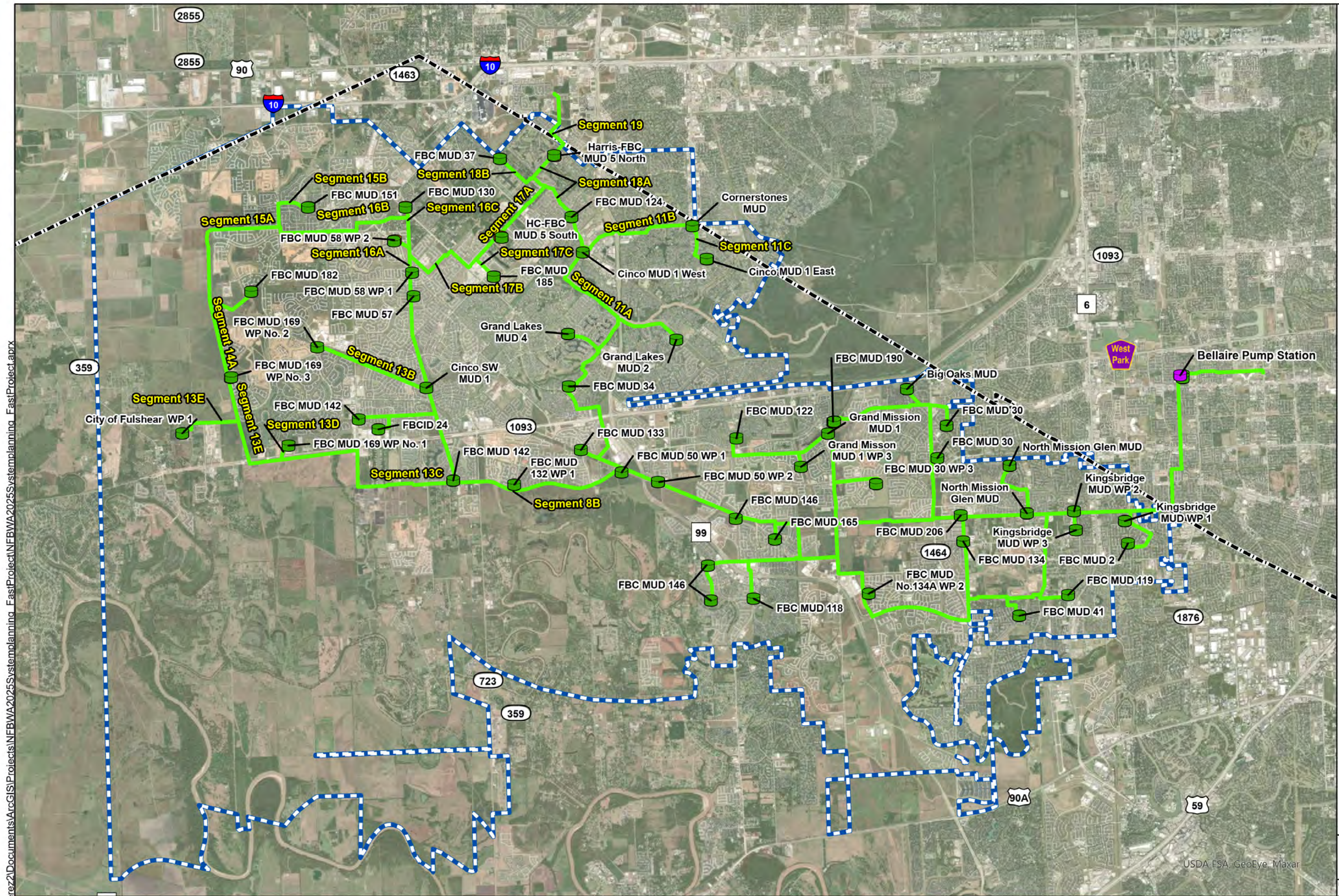
Phase 5

Date: Dec. 2020 Job No: 2248-14

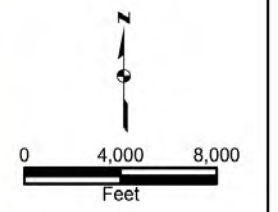
Phase 5

BGE, Inc.
Tel: 281-558-8700
www.bgeinc.com

Earthstar Geographics



- Existing Pump Station
- Existing Water Plant Connection
- Future Water Plant Connection
- Existing Waterline
- Future Waterline
- Fort Bend County Line
- NFBWA Boundary



Disclaimer:
Every effort has been made to ensure the accuracy of the basemap data. BGE, Inc. assumes no liability or damages due to errors or omissions.

Phase 6

Date: Dec. 2020 Job No: 2248-14

C:\Users\lcere2\Documents\ArcGIS\Projects\NFBWA2025\Systemplanning_East\Project.aprx

Phase 6

BGE, Inc.
Tel: 281-558-8700
www.bgeinc.com